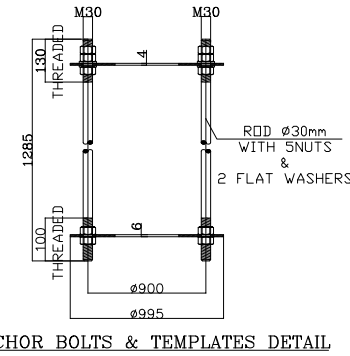
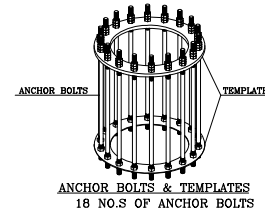
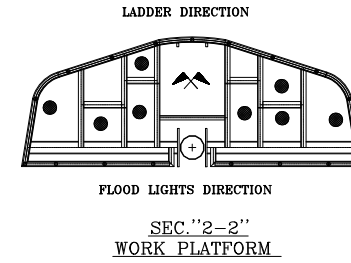
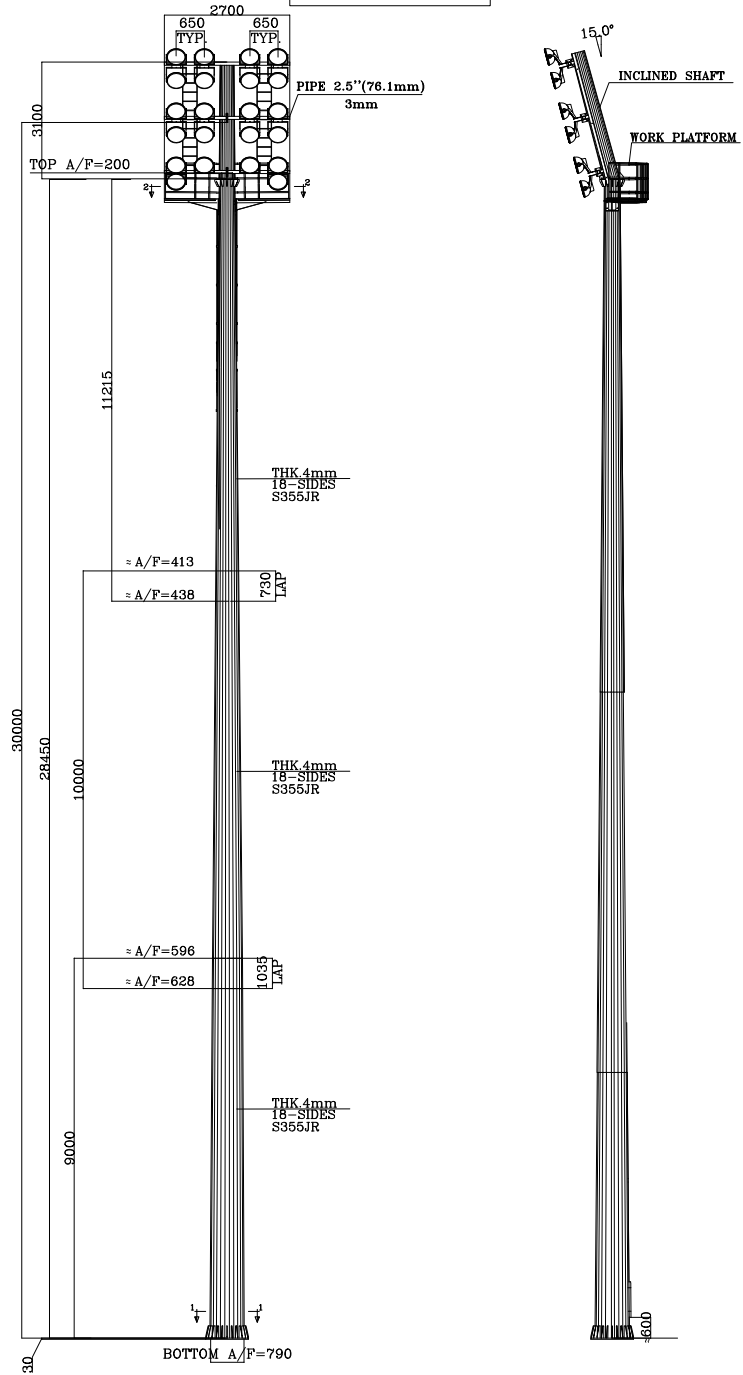
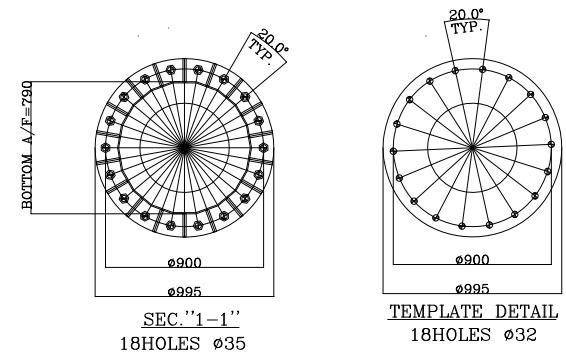


22 NO.S OF FLOOD LIGHT
 TYP.-SITECO SICOMPACT R3 MAXI
 5NA75691WP.1
 SUPPLY BY OTHERS



ANCHOR BOLTS & TEMPLATES DETAIL



- NOTES:-**
- 1-DESIGN PER AASHTO 2009 , STANDARD SPECIFICATION FOR STRUCTURAL SUPPORT FOR HIGHWAY SIGNS, LUMINAIRES & TRAFFIC SIGNALS.
 - 2-DESIGN WIND SPEED =125Km/Hr.
 - 3-MATERIALS USED :ALL MATERIALS ARE S235JR EN 10025 EXCEPT SHAFT & ANCHOR BOLTS ARE S355JR EN 10025
 - 4-ALL STEEL PARTS ARE HOT DIPPED GALVANIZED TO BS EN ISO 1461:2009
 - 5-DIMENSIONS ARE IN m.m. UNLESS OTHERWISE SPECIFIED
 - 6-BOND STRESS BETWEEN ANCHOR BOLTS & CONCRETE=1N/mm².
 - 7-FLOOD LIGHT ARE: WT.=16.5kg Area=0.20m².
 - 8- EFFECTED PROJECTED AREA =8.1m²
 - 9-DUE DETAIL TO PRESENT DEVELOPMENTS THE DETAILS OF ACC. MAY BE CHANGED DURING FABRICATION
 - 10-TOLERANCE ARE ACCORDING TO AASHTO 2009.
 - 11-THE CAGED LADDER IS BOLTED.



TITLE: GENERAL LAYOUT		NAME	DATE
PROJECT: 30m LIGHTING POLE CARRYING 22 F.L.		DRAWN	
DWG NO.		CHECK'D	
CODE NO.		APPROV'D	
DO NOT SCALE DRAWING		REF. NO.	
REVISION NO. 0/0		ABBREVIATIONS USED IN DRAWING	
REV. NO.	REV.0	REV.1	REV.2
DATE			
BY:			